

Unit Tube Constant Head Permeability Tester

This is a tester to measure volume of water that permeates into the settled diameter and length soil in the settled times.



Model	QRCHP-1201	QRCHP-1202
Type	1 Continuous type	3 Continuous type
Permeability Mold	Ø100 × 170 mm Height 150 mm	
Bottom Plate Cover	Ø136 mm × Thickness 12 mm brass	
Wire Screen	#40 (420 μm) Brass or stainless steel	
Water Tank	200 × 200 × 160 mm (Transparent acrylic)	
Mass Cylinder	Glass or transparent acrylic	
Stand	Steel	
Tamper	1 ea	

Portable Type Variable Permeability Tester

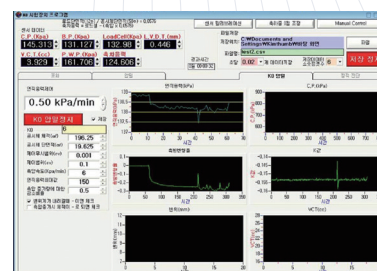
This tester is used to decide water permeability coefficient of soil simply and apply test for soil sample of low water permeability coefficient.



Model	QRPVP-1201
Permeability Mold	Ø100 × 127 mm
Wire Screen	#40(420 μm) - 1ea, #200(74 μm) - 2ea
Stand Pipe	Ø10 × 1 000 mm, Scale glass tube
Water Tank	Steel
Tamper	Ø25 mm

Program & Membrane Jacket

This is an equipment to maintain setup temperature of soil suspension during measurement of the gravity.



Model	QRTRM-1201	QRTRM-1202
Size	Ø35 × 150 (mm)	Ø50 × 180 (mm)

Model	QRTRMJ-1201	QRTRMJ-1202
Size	Ø35 (mm)	Ø50 (mm)