

Liquid Limit Tester



This is a tester to calculate the water content ratio of liquid state and plastic conditions of the soil.

Model	QRLL-1201
Brass Cup	Ø94 × 27 mm
Cup Drop	10 mm, inclination 75°
Base	Hard rubber board
Grooving Tool	1 ea
Special Accessories	Spatula, mixing dish, graduated cylinder (100 ml)



Motorized Liquid Limit Tester



This is a tester to calculate the water content ratio of liquid state and plastic conditions of the soil.

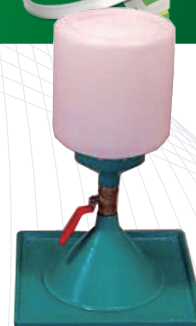
Model	QRLL-1202
Brass Cup	Ø94 × 27 mm
Cup Drop	10 mm, Inclination 75°
Base	Hard rubber board
Grooving Tool	1ea
Operation	Motor, 220 V
Option	Spatula, mixing dish, graduated cylinder (100 ml)



Sand Density Cone Tester



This is a tester measures the unit weight of the soil from site by the sand replacement.



Model	QRSDC-1201	QRSDC-1202	QRSDC-1203
Plastic Sand Jar	4 liters	8 liters	12 liters
Cone Size	Ø162 mm	Ø203 mm	Ø305 mm
Tamping Hole	Ø12.7 mm	Ø16 mm	Ø16 mm
Tamping Weight	300 × 300 mm	380 × 380 mm	430 × 430 mm
Material	Casting aluminum		