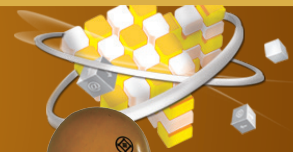


Safety Cap Chin Strap Untying Testing Machine

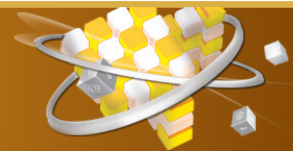


This testing machine is operated by servo motor and computer program and used to test chin strap untying of safety cap.

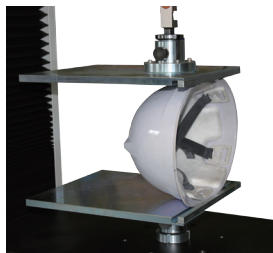
Model	QRSCSU-301
Max. Load Capacity (kN)	1
Min. Load Capacity (N)	0.02
Accuracy	Within $\pm 0.5\%$ of the indicated load
Operation Type	LCD Computer, AC servo motor and ball screw
Test Speed	0.1 ~ 1 000 mm/min
Test Control	Load, stroke, strain
Load Sensor	Load cell
Testing Speed Control	Computer, auto return, auto zero, auto range, auto test
Safety Device	Over load limit switch, micro limit switch
Tensile Test Space (mm)	500
Power	1P, AC 220 V, 60 Hz
Power Consumption (kW)	1
Load Dimension (mm)	430 \times 340 \times 900
Weight (kg)	55



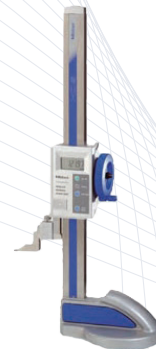
Safety Cap Jig



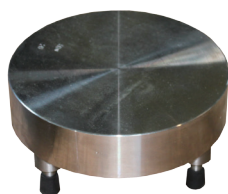
The jig to relative helmets



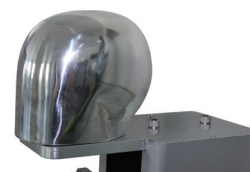
Model	QRCJ-301
Compression Jig	240 \times 240



Model	QRPHM-303
Height Measurement	600 mm



Model	QRPJ-302
Push Jig	50 N



Model	QRHM-304
Head Model	Aluminum