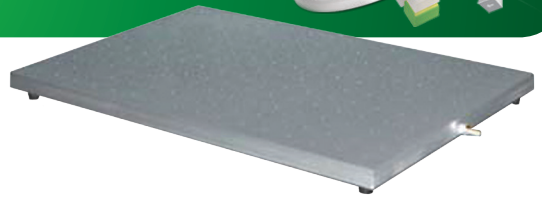


Vacuum Plate & Pump

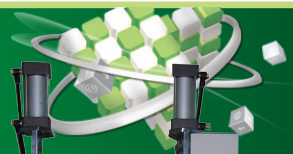


This device fix specimen by vacuum so as to coat sample easily.



Model	QRVPP-501
Size	200 × 300, 250 × 400, 300 × 450 mm
Hole	Ø1, 15 × 15 mm
Pump	Vacuum pump

Dry Laminator



This device is used to dry and roll paper or film into form of sheet.



Model	QRDL-501
Roll Size	Ø100 × 300 mm
Roll Material	Up-rubber, down-steel
Temperature	250 °C
Speed	10 mm/min
Air Gauge	10 kgfcm ²
Switch	Up, down

Punch Type Sample Cutter



This device is used to produce specimen of film and thin plastic for tension or internal tearing strength test.



Model	QRPSC-501	QRPSC-502
Movement Range	150 mm	50 mm
Handle Size	Ø600	450
Sample Table	150 × 200 mm	150 × 200 mm